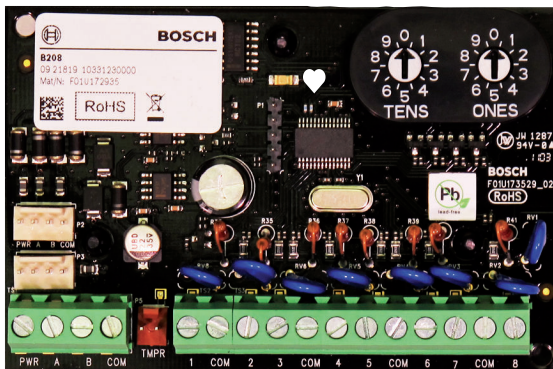


# B208 Octo-input Module

www.boschsecurity.com



**BOSCH**  
Invented for life



- ▶ Programmable input point functions
- ▶ Easy to read switch addressing
- ▶ 2 interconnect wiring connectors
- ▶ Provides eight points

The B208 Octo-input Module is an 8 point expansion device that connects to the control panel through the SDI2 bus. This module is fully supervised and communicates back to the control panel all point status changes. The module expansion points operate the same as the points on the control panel. Industrial, commercial, and institutional facilities are typical installations for the B208 module. The B208 connects to the SDI2 bus on the control panel using SDI2 terminals, or using the interconnect cable. You can connect multiple B208 modules to a single control panel. The B208 address switches allow for ease of use in device addressing.

## System overview

The B208 Octo-input Module connects to a control panel through the SDI2 bus. This module is supervised and communicates back to the control panel all point status changes. The module's expansion points operate the same as the points on the control panel.

## Functions

### Loop inputs

The B208 uses up to eight inputs which may be Normally Open (NO), or Normally Closed (NC) with 1k  $\Omega$  EOL resistor(s) for supervision.

## Certifications and approvals

The following table lists regulatory approvals by region.

Region	
US	UL 365 - Police Station Connected Burglar Alarm Units and Systems
	UL 609 - Local Burglar Alarm Units and Systems
	UL 636 - Holdup Alarm Units and Systems
	UL 864 - Control Units and Accessories for Fire Alarm Systems (Commercial Fire)
	UL 985 - Household Fire Warning System Units
	UL 1023 - Household Burglar Alarm System Units
	UL 1076 - Proprietary Burglar Alarm Units and Systems
	UL 1610 - Central Station Burglar Alarm Units
	CSFM - California Office of The State Fire Marshall
	FCC Part 15 Class B
Canada	FDNY - Fire Department of New York
	FM 3010 - Fire Alarm Signaling Systems
	CAN/ULC S303 - Local Burglar Alarm Units and Systems

CAN/ULC S304 - Signal Receiving Centre and Premise

ICES-003 - Information Technology Equipment (ITE)

ULC-ORD C1023 - Household Burglar Alarm System Units

ULC-ORD C1076 - Proprietary Burglar Alarm Units and System

The following table lists the certificates available for download from the Product Page at [www.boschsecurity.com](http://www.boschsecurity.com).

Region	Certification
USA	UL 20130109-S5579; UL 864 - Control Units and Accessories for Fire Alarm Systems; UL 636 - Holdup Alarm Units and Systems; UL 1076 - Proprietary Burglar Alarm Units and Systems; UL 1610 - Central Station Burglar Alarm Units; UL 365 - Police Station Connected Burglar Alarm Units and Systems; UL 609 - Local Burglar Alarm Units and Systems; UL985 - Residential Fire Warning System Control Units; UL 1023 - Household Burglar-Alarm System Units; ULC/ORD C1076 - Proprietary Burglar Alarm Units and Systems; ULC-S304-06 - Signal Receiving Centre and Premise Burglar Alarm Control Units; ULC-S303-M91 - Local Burglar alarm Units and Systems; ULC-ORD C1023 - Household Burglar-Alarm System Units
	CSFM see our website
	FDNY-CoA #6174 UL 864 9th Edition

### Installation/configuration notes

#### Wiring considerations

The module to the control panel using the PWR, A, B, COM terminals on the control panel using the screw terminal strip or the interconnect wiring connector. Use 12 AWG to 22 AWG (1.5 mm to 0.6 mm) wires from the module to the control panel.

### Parts included

Quantity	Component
1	Octo-input module
1	Hardware pack
1	interconnect cable
1	Literature pack

### Technical specifications

#### Properties

Dimensions	2.5 in x 3.8 in x 0.60 in (6.37 cm x 9.6 cm x 1.5 cm)
------------	--

### Environmental considerations

Relative humidity	5% to 93% at +32°C (+90°F)
Temperature (operating)	0°C to +49°C (+32°F to +120°F)

### Power requirements

Current	35 mA
Voltage	12 VDC nominal

### Wiring

SDI2 wiring	Maximum distance – Wire size (unshielded wire only): 12 in (30.48 cm)
Wiring	Maximum distance – Wire size (unshielded wire only): 1000 ft (305 m) – 22 AWG (0.65 mm) 1000 ft (305 m) – 18 AWG (2 mm) Unshielded wire only

### Loop inputs

Loop Inputs	Up to eight inputs. Input contacts may be Normally Open (NO) or Normally Closed (NC) with 1kΩ EOL resistor(s) for supervision. Note: Normally Closed (NC) is not permitted in Fire installations.
-------------	---

### Compatibility

For UL 864 compliance, use a UL commercial fire approved control panel.

Control panels	B9512G/B9512G-E (Up to 59 modules) B8512G/B8512G-E (Up to 9 modules) B5512/B5512E (Up to 4 modules) B4512/B4512E (Up to 2 modules) D9412GV4 (Up to 24 modules) D7412GV4 (Up to 7 modules) D7212GV4 (Up to 3 modules)
----------------	--

### Ordering information

#### B208 Octo-input Module

Provides 8 programmable inputs.

Order number **B208**

**Represented by:**

**Americas:**

Bosch Security Systems, Inc.  
130 Perinton Parkway  
Fairport, New York, 14450, USA  
Phone: +1 800 289 0096  
Fax: +1 585 223 9180  
security.sales@us.bosch.com  
www.boschsecurity.us

**Europe, Middle East, Africa:**

Bosch Security Systems B.V.  
P.O. Box 80002  
5617 BA Eindhoven, The Netherlands  
Phone: + 31 40 2577 284  
Fax: +31 40 2577 330  
emea.securitysystems@bosch.com  
www.boschsecurity.com

**Asia-Pacific:**

Robert Bosch (SEA) Pte Ltd, Security  
Systems  
11 Bishan Street 21  
Singapore 573943  
Phone: +65 6571 2808  
Fax: +65 6571 2699  
apr.securitysystems@bosch.com  
www.boschsecurity.asia

**China:**

Bosch (Shanghai) Security Systems Ltd.  
203 Building, No. 333 Fuquan Road  
North IBP  
Changning District, Shanghai  
200335 China  
Phone +86 21 22181111  
Fax: +86 21 22182398  
www.boschsecurity.com.cn

**America Latina:**

Robert Bosch Ltda Security Systems Division  
Via Anhanguera, Km 98  
CEP 13065-900  
Campinas, Sao Paulo, Brazil  
Phone: +55 19 2103 2860  
Fax: +55 19 2103 2862  
latam.boschsecurity@bosch.com  
www.boschsecurity.com