

Honeywell

N8788V1 5/99 Rev. E
**ADEMCO 5814
DOOR/WINDOW
TRANSMITTER**

INSTALLATION INSTRUCTIONS

Use the 5814 Door/Window Transmitter only with alarm systems that support 5800 series wireless devices. The transmitter has its own unique serial number permanently assigned during manufacture, which must be entered into the control panel prior to the transmitter's usage. Refer to the control unit's installation instructions for programming details.

Note: Enroll 5814 transmitters as "RF" (i.e. supervised RF) Type (mandatory for UL installations). The 5814 is assigned one zone.

MOUNTING

The unit is generally mounted as shown in the diagram, with the magnet located to the unit's right. However, it can be installed in any position, as long as the relationship of the unit to the magnet is maintained.

Before mounting the transmitter permanently, conduct Go/No Go tests (see control's instructions) to verify adequate signal strength from the mounting location.

1. **Mount using double-faced tape** (supplied) by affixing it to the back of the unit and mounting the unit in place.

Warning: Do not mount unit in a location where temperature might approach freezing point (32°F).

2. Mount the magnet (supplied) adjacent to the alignment mark on the unit's case (see Diagram).

SPECIFICATIONS

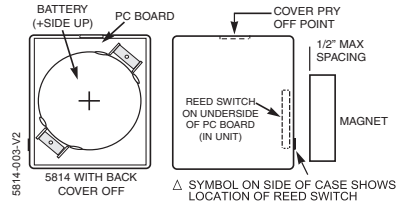
Unit Dimensions:

1-1/2" (37mm) x 1-3/16" (30mm) x 5/8" (15mm)

Battery: Duracell DL2430 or Renata CR2430



N8788V1 5/99 Rev. E



REFER TO THE INSTALLATION INSTRUCTIONS FOR THE RECEIVER/CONTROL WITH WHICH THIS DEVICE IS USED FOR WARRANTY INFORMATION AND DETAILS REGARDING LIMITATIONS OF THE ENTIRE ALARM SYSTEM.

FEDERAL COMMUNICATIONS COMMISSION STATEMENTS:

The user shall not make any changes or modifications to the equipment unless authorized by the Installation Instructions or User's Manual. Unauthorized changes or modifications could void the user's authority to operate the equipment.

FCC / IC STATEMENT:

This device complies with Part 15 of the FCC Rules and RSS-210 of the IC rules. Operation is subject to the following two conditions: (1) This device may not cause harmful interference (2) This device must accept any interference received, including interference that may cause undesired operation.

Cet appareil est conforme à la partie 15 des règles de la FCC & de RSS 210 des Industries Canada. Son fonctionnement est soumis aux conditions suivantes: (1) Cet appareil ne doit pas causer d'interférences nuisibles. (2) Cet appareil doit accepter toute interférence reçue y compris les interférences causant une réception indésirable.

2 Corporate Center Drive, Suite 100
P.O. Box 9040, Melville, NY 11747
Copyright © 2008 Honeywell International Inc.
www.honeywell.com/security

Honeywell