

**Status indicators**

The Status indicators provide a quick visual reference for systems status.

**Ready to arm** ✓

Indicator lights when the system is ready to turn on (arm). (24 hour points, such as fire points, are always monitored.)

**On (armed)** 🔒

Indicator lights when the system is on (armed).

**Gas** GAS

Indicator lights when a gas alarm exists.

**Power** ⚡

Indicator lights when the system has AC (Mains) power.

**Fire function keys**

When pressed, these keys turn on keypad backlighting and emit the keypress tone (short beep). (Might require a passcode.)

**ACK**

Press to acknowledge the system alarm or trouble condition. The keypad shows the highest priority alarm point, and lights the [PREV] and [NEXT] keys if additional alarms exist.

**SILENCE**

Press to silence fire alarms or troubles.

**RESET**

Press to reset devices such as smoke detectors, and clear restored points.

**DRILL**

Press and hold to initiate a fire drill.

**Navigation function keys**

When pressed, these keys turn on keypad backlighting and emit the keypress tone (short beep).

**PREV and NEXT**

When lit, use these keys to scroll through alarm points, lists, and text.

**ENTER**

Use the [ENTER] key to complete the entry of your passcode, to select a menu item, or to answer Yes to a keypad request.

**ESC**

The [ESC] (Escape) key has two uses. First, use the [ESC] (Escape) key to exit from menus and functions. Also, use the key as a backspace when you enter names and numbers.

**CMD**

Use the [CMD] key in combination with one or two number keys to perform select functions.

**Commands**

You can initiate functions with the [CMD] key plus the one or two digit command.

Use [CMD]8 to open the Main menu.

If you know the command number, press the [CMD] key and then the one or two digit command.

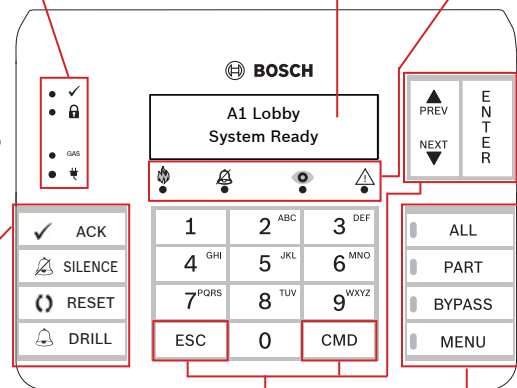
\_\_\_\_\_ or \_\_\_\_\_

After you press [CMD], you can use [PREV] or [NEXT] to move through the list of commands. Press [ENTER] when viewing the desired command to activate it.

Command	Function
[CMD] 0	Bypass
[CMD] 0 0	Unbypass
[CMD] 1	All on (with delay)
[CMD] 1 1	All On, Instant
[CMD] 2	Part On, Instant
[CMD] 3	Part On (with delay)
[CMD] 4	Silence Trouble Sounders
[CMD] 4 0	See Alarms
[CMD] 4 1	Test Report
[CMD] 4 2	Status Report
[CMD] 4 3	RPS Answer
[CMD] 4 4	Intrusion Walk Test
[CMD] 4 5	Date and Time
[CMD] 4 6	Door Control Menu
[CMD] 4 7	Reset Sensors

Command	Function
[CMD] 4 9	Change Display
[CMD] 5 0	Go to Area
[CMD] 5 1	Extend Close
[CMD] 5	SKED Menu
[CMD] 5 3	Delete User
[CMD] 5 4	Output Change Menu
[CMD] 5 5	Change Passcode
[CMD] 5 6	Add User
[CMD] 5 8	Fire Walk Test
[CMD] 5 9	Show Revision
[CMD] 6	Watch Mode
[CMD] 7*	Special Alert _____
[CMD] 8	Open Main Menu
[CMD] 9*	Special Alert _____

**Alphanumeric display**



**Fire Status indicators**

The Fire Status indicators provide a quick visual reference of the fire system status.

**Fire** 🔥

Indicator lights when a fire alarm condition exists; turns off when all fire alarm points are restored and event memory cleared.

**Silenced** 🔇

Indicator lights when a fire alarm condition is silenced; turns off when a user presses the RESET button or if another fire alarm condition occurs.

**Supervisory** 👁️

Indicator lights when any point programmed as supervisory is not normal; turns off when all supervisory points return to normal and are reset.

**Trouble** ⚠️

Indicator lights when a trouble condition exists.

**Intrusion function keys (B925F only)**

When pressed, these keys turn on keypad backlighting and emit the keypress tone (short beep).

**ALL**

Press to turn the intrusion system All On.

**PART**

Press to turn the intrusion system Part On.

**BYPASS**

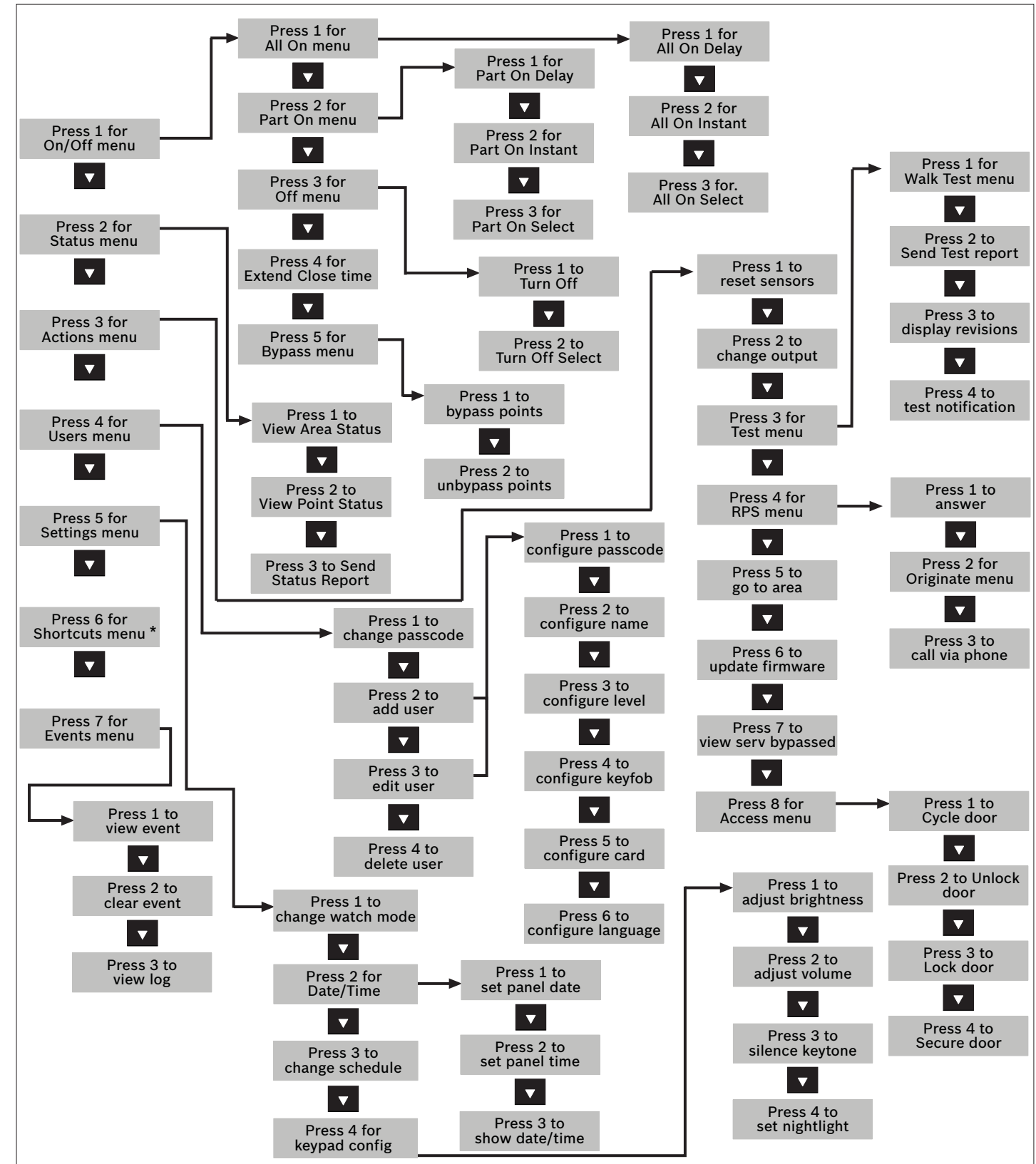
Press to open the menu to bypass points.

**MENU**

Press to open the keypad's Main menu. (To open the Main menu on a B926F, press [CMD][8].)

**Menu tree**

The keypad offers an easy-to-use menu tree structure. To access the menu tree, press [MENU] (B925F only) or press [CMD][8]. Each menu option has a number. At each level, you can press the number for the desired menu option. Otherwise, use [PREV] or [NEXT] to review your options at that level, and then press [ENTER] when you see the desired menu option. The menu tree figure shows the menu structure and the numbers associated for each menu option.



\*As configured by your security company.

## 2 | Turn on (arm) your intrusion system

You can turn on your intrusion system using different methods. Do one of the following:

Enter your passcode and press [ENTER] to turn All On with a delay.

\_\_\_\_\_ or \_\_\_\_\_

Use one of the available commands:

For All On (with delay): [CMD][1]

For All On, Instant: [CMD][1][1]

For Part On, Instant: [CMD][2]

For Part On (with delay): [CMD][3]

\_\_\_\_\_ or \_\_\_\_\_

Use the menus. Begin by pressing [MENU] (B925F only) or by pressing [CMD][8].

For All On: Go to [1] On/Off > [1] All On > [1] All On Delay.

For All On, Instant: Go to [1] On/Off > [1] All On > [2] All On Instant.

For Part On: Go to [1] On/Off > [2] Part On > [1] Part On Delay

For Part On, Instant: Go to [1] On/Off > [2] Part On > [2] Part On Instant.

The menu options also allow you to choose individual areas to turn on. Open the All On or Part On menu, press [3] to open the Select menu, and then use [NEXT] and [ENTER] to choose On Instant or On Delay and the area to turn on.

\_\_\_\_\_ or \_\_\_\_\_

On a B925F, press the [ALL] or [PART] key.

## 3 | Turn off (disarm) your intrusion system

You can turn off your system using different methods. Do one of the following:

Enter your passcode.

\_\_\_\_\_ or \_\_\_\_\_

Use the menus. Begin by pressing [MENU] (B925F only) or by pressing [CMD][8].

For Turn Off: Go to [1] On/Off > [3] Off > [1] Off.

For Turn Off Select: Go to [1] On/Off > [3] Off > [2] Off Select. Then

use [NEXT] and [ENTER] to choose the area to turn off.

## 4 | Change your passcode

You can change your own passcode. Do one of the following:

Use the command:  
[CMD][5][5], and then follow the prompts.

\_\_\_\_\_ or \_\_\_\_\_

Begin by pressing [MENU] (B925F only) or by pressing [CMD][8].

Go to [4] Users > [1] Change Passcode, and then follow the prompts.

## 5 | Configure users

You can change passcodes for other users, and you can add, remove, and replace keyfobs and cards.

### 5.1 | Add users

Use the command or the menu to open the Add User option, and then follow the prompts to configure the user's passcode, name, authority level, keyfob (if desired), language (when applicable), and card (when applicable).

Use the command:  
[CMD][5][6]

\_\_\_\_\_ or \_\_\_\_\_

Use the menus:

Begin by pressing [MENU] (B925F only) or by pressing [CMD][8].

Go to [4] Users > [2] Add User.

### 5.2 | Edit Users

Use the menu to open the Edit User option, and then follow the prompts to configure the user's passcode, name, authority level, keyfob (if desired), language (when applicable), and card (when applicable).

Use the menus:

Begin by pressing [MENU] (B925F only) or by pressing [CMD][8].

Go to [4] Users > [3] Edit User.

### 5.3 | Delete users

Use the command or the menu to open the Delete User option, and then follow the prompts to delete the user.

Use the command:  
[CMD][5][3]

\_\_\_\_\_ or \_\_\_\_\_

Use the menus:

Begin by pressing [MENU] (B925F only) or by pressing [CMD][8].

Go to [4] Users > [4] Delete User.

## 6 | Fire keypad operation

The display and status indicators show your system's operation status. The keypad sounder also indicates status.

### 6.1 | Fire Alarm operation

When a fire alarm occurs, the Fire indicator lights, and the keypad emits a pulsing high-pitched fire tone. The tone sounds for the duration set by your security company. The keypad shows the highest priority alarm point, and lights the [PREV] and [NEXT] keys if additional alarms exist. To view additional system or point troubles, press [NEXT] repeatedly. Press [ACK] to acknowledge the alarm.

### 6.2 | Fire Trouble operation

When a trouble condition occurs (such as wiring for a point is cut or AC power fails), the keypad sounder activates briefly approximately every six seconds. The Trouble indicator lights and the keypad shows the highest priority trouble. Press [ACK] to acknowledge the trouble. To view additional system or point troubles, press [NEXT] repeatedly. Press [SILENCE] to silence the alarm.

### 6.3 | Fire Supervisory operation

When a supervisory condition occurs, the sounder activates briefly approximately every six seconds. The Supervisory indicator lights and the keypad shows a fire supervisory message. Press [ACK] to acknowledge the supervisory condition. To view point supervisory conditions, press [NEXT] repeatedly. Press [ACK] to acknowledge the alarm.

### 6.4 | Alarm or Trouble Silence

To silence troubles, press [SILENCE] or [CMD][4] and enter your passcode (if required).

### 6.5 | Reset detectors

To reset detectors, silence the alarms, and clear events in one step, press [RESET] and enter your passcode (if required). You can also use the Menu to reset detectors. Notice! You can use [CMD][4][7] to reset detectors, but not silence or clear events.

### 6.6 | Fire drills

To initiate a fire drill, press and hold [DRILL] and enter your passcode (if required).

## 7 | Shortcuts

You can access your shortcuts through the menu:

Begin by pressing [MENU] (B925F only) or by pressing [CMD][8].

Go to [6] Shortcuts and then use [NEXT] and [ENTER] to choose the shortcut you wish to run.

## 8 | Keypad cleaning

Use a soft cloth and non-abrasive cleaning solution to clean your keypad (for example, microfiber cloth and eyeglass cleaner). Spray the cleaner onto the cloth. Do not spray cleaners directly onto the keypad.

### Copyright

This document is the intellectual property of Bosch Security Systems, Inc. and is protected by copyright. All rights reserved.

### Trademarks

All hardware and software product names used in this document are likely to be registered trademarks and must be treated accordingly.



**Fire Keypad**  
B925F/B926F



en User's Quick Reference Guide

**Bosch Security Systems, Inc.**  
130 Perinton Parkway  
Fairport, NY 14450  
USA  
[www.boschsecurity.com](http://www.boschsecurity.com)

**Bosch Sicherheitssysteme GmbH**  
Robert-Bosch-Ring 5  
85630 Grasbrunn  
Germany

